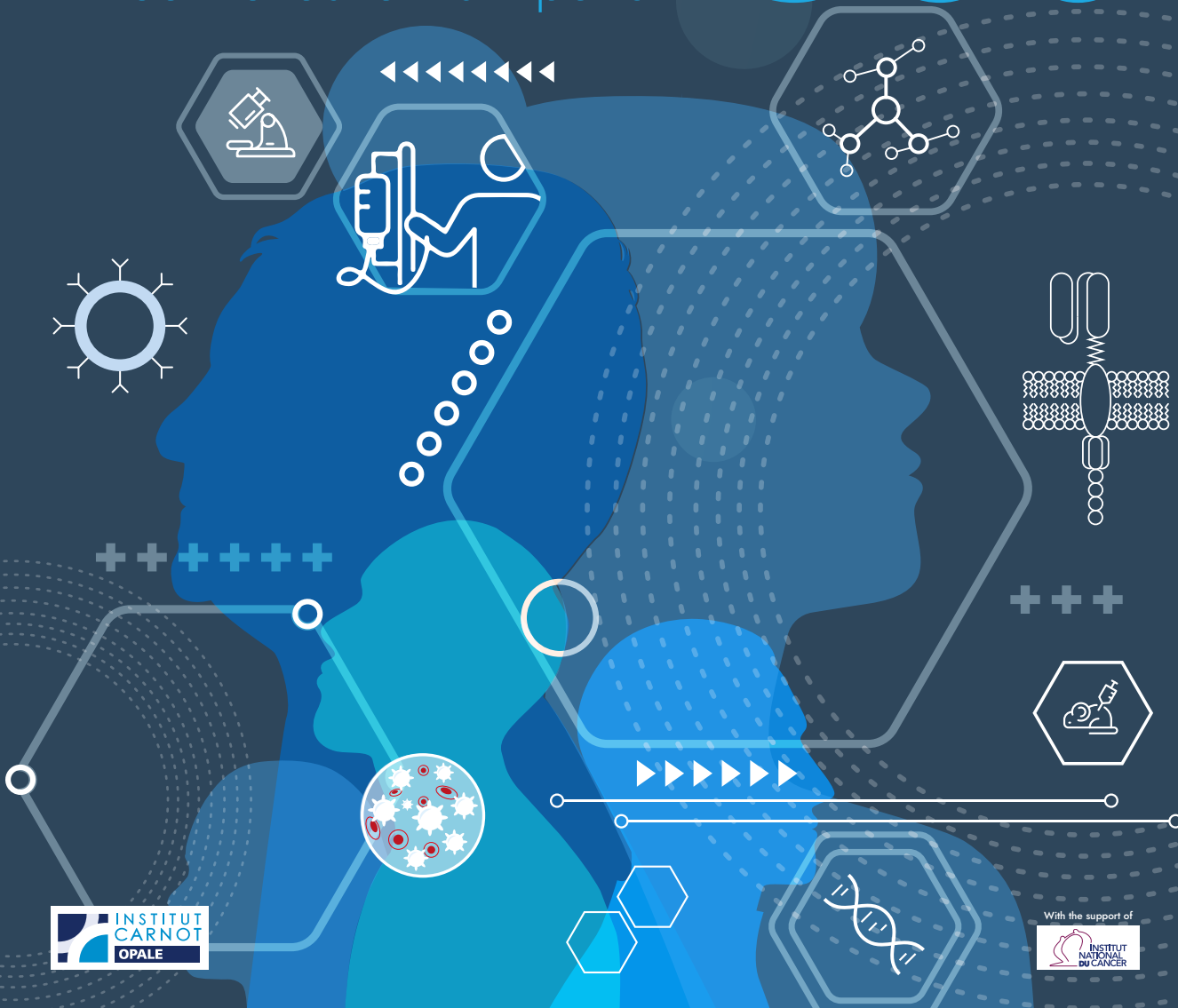


PROGRAM

LEUKEMIA 360

#MeettheLeukemiaExperts



NOV 13, 2024
PIERRE MENDÈS FRANCE CONFERENCE CENTER
PARIS, FRANCE

SUMMARY

Editorial	3
Synopsis	4
Wednesday, November 13, 2024	6

....

An event by



Supported by



Logistic organization by



→ leukemia360.org

LEUKEMIA 360

#MeettheLeukemiaExperts

Paris, November 13, 2024

This is the 1st edition of LEUKEMIA 360, a meeting to be organized every year in Paris, France, by OPALÉ, The Organization for Partnerships in Leukemia. It will gather for the first time 40+ academic entities who will showcase innovations, scientific offers and R&D capacities with no international equivalent in the field of leukemia and related diseases, overall the deadliest blood cancer and the first childhood cancer.

After hearing the voice of a patient organization, thought scientific opinion leaders from Europe, China and the United States will share their views on hot scientific topics for researchers and developers of therapeutic and diagnostic solutions. Several examples of public-private partnering success stories will be presented by researchers and partner companies to the public. Round tables will allow participants to listen to leukemia R&D experts on ways to accelerate together innovation and its market access. OPALÉ entities representatives will display the institute's R&D offer in interactive satellite sessions. And 1:1 meetings throughout the day will allow the actors (academia, industry, patient representatives, investors, institutions) of this vibrant scientific area and dynamic market to discuss possible collaborations. Other networking opportunities will be available during the meeting.

The event will take place at the beautiful Pierre Mendès France Conference Center, at the headquarters of France's Ministry of the Economy, Finance and Industrial and Digital Sovereignty. It is ideally located in Paris downtown, with easy access to all modes of transportation.

Presentations and discussions will be in English language. Registration is free but should be done as soon as possible as places are limited. Applications validation by the organizers will be a requisite. The meeting is not open to the general public.

Wednesday, November 13, 2024 | SYNOPSIS

ROOMS	CONFERENCE ROOM	BLOCH-LAINÉ ROOM	
8:00AM > 9:00AM	DELEGATES ARRIVAL - WELCOMING COFFEE & REGISTRATION		
9:00AM > 9:15AM	WELCOME ADDRESS	////////////////////////////////////	
9:15AM > 9:30AM	MANIFESTO WE, THE LEUKEMIA PATIENTS	////////////////////////////////////	
9:30AM > 11:00AM	SCIENTIFIC PRESENTATIONS SESSION 1	1 : 1 MEETINGS 30 MINUTES SLOTS	
11:00AM > 11:30AM	COFFEE BREAK AND BOOTH VISIT - NETWORKING		
11:30AM > 1:00PM	SCIENTIFIC PRESENTATIONS SESSION 2	1 : 1 MEETINGS 30 MINUTES SLOTS	
1:00PM > 2:00PM	LUNCH BREAK AND BOOTH VISIT - NETWORKING		
2:00PM > 2:15PM	THE PRESIDENT OF FRANCE'S NATIONAL CANCER INSTITUT	////////////////////////////////////	
2:15PM > 2:40PM	OPALE - THE ORGANIZATION FOR PARTNERSHIPS IN LEUKEMIA	1 : 1 MEETINGS 30 MINUTES SLOTS	
2:40PM > 3:00PM	////////////////////////////////////		
3:00PM > 3:50PM	INTERNATIONAL COLLABORATIONS		
3:50PM > 4:10PM	////////////////////////////////////		
4:10PM > 4:55PM	COMPANIES AND OPALE RESEARCH ENTITIES DEVELOPING INNOVATIONS		
4:55PM > 5:15PM	////////////////////////////////////		
5:15PM > 5:45PM	ROUND TABLE - KEYS TO SUCCESSFUL INDUSTRY-ACADEMIA RESEARCH PARTNERSHIPS		
5:45PM > 5:50PM	TAKE HOME MESSAGES		
5:50PM > 7:00PM	APERRO AND BOOTH VISIT - NETWORKING		

Wednesday, November 13, 2024 | SYNOPSIS

ROOMS	1, 2 & 3 ROOMS	HALL
8:00AM > 9:00AM	DELEGATES ARRIVAL - WELCOMING COFFEE & REGISTRATION	
9:00AM > 9:15AM	////////////////////////////////////	EXHIBITION AND BREAKS AREA
9:15AM > 9:30AM	////////////////////////////////////	
9:30AM > 11:00AM	////////////////////////////////////	
11AM > 11:30AM	COFFEE BREAK AND BOOTH VISIT - NETWORKING	
11:30AM > 1:00PM	////////////////////////////////////	EXHIBITION AND BREAKS AREA
1:00PM > 2:00PM	LUNCH BREAK AND BOOTH VISIT - NETWORKING	
2:00PM > 2:15PM	////////////////////////////////////	EXHIBITION AND BREAKS AREA
2:15PM > 2:40PM	////////////////////////////////////	
2:40PM > 3:00PM	R&D OFFER	
3:00PM > 3:50PM	////////////////////////////////////	
3:50PM > 4:10PM	R&D OFFER	
4:10PM > 4:55PM	////////////////////////////////////	
4:55PM > 5:15PM	R&D OFFER	
5:15PM > 5:45PM	////////////////////////////////////	
5:45PM > 5:50PM	////////////////////////////////////	
5:50PM > 7:00PM	APERRO AND BOOTH VISIT - NETWORKING	

LEUKEMIA360 ▶ Wednesday, Nov.13, 2024

— AM PROGRAM

8:00AM > 9:00AM
DELEGATES
ARRIVAL /
WELCOMING
COFFEE

EXHIBITION
AND BREAKS
AREA

All the sessions on Wednesday November 13, 2024 will be moderated by Alison Munro.

9:00AM > 9:15AM | CONFERENCE ROOM | **WELCOME ADDRESS**

Hervé Dombret, Institut Carnot OPALE, and Virginie Gandemer, Société Française de lutte contre les Cancers et les leucémies de l'Enfant et de l'adolescent (Paris, France)

9:15AM > 9:30AM | CONFERENCE ROOM | **MANIFESTO: WE THE LEUKEMIA PATIENTS**

Stéphanie Fugain, Association Laurette Fugain (Paris, France)

9:30AM > 11:00AM | CONFERENCE ROOM | **SCIENTIFIC PRESENTATIONS SESSION 1**

9:30am > 10:00am

Leukemia response to therapeutic stresses. Hugues de Thé, U944, THEMA Saint-Louis Institute (Paris, France)

10:00am > 10:30am

Use of MRD in AML: treatment stratifying tool, trial endpoint? Sylvie Freeman, University of Birmingham (Birmingham, UK)

10:30am > 11:00am

New immunotherapies versus transplantation in leukemia. Robert Zeiser, University of Freiburg (Freiburg, Germany)

11:00AM > 11:30AM
COFFEE BREAK
AND BOOTH
VISIT -
NETWORKING

EXHIBITION
AND BREAKS
AREA

11:30AM > 1:00PM | CONFERENCE ROOM | **SCIENTIFIC PRESENTATIONS SESSION 2**

11:30am > 12:00pm

BCL-2 inhibition: resistance and combinations. Marina Konopleva, Montefiore Einstein Cancer Center (New York, USA)

12:00pm > 12:30pm

Metabolic resistance in leukemia. Jean-Emmanuel Sarry, Centre de Recherches en Cancérologie (Toulouse, France)

12:30pm > 1:00pm

Drugable targets in myeloproliferative neoplasms. Susanne Isfort, Hannover Medical School (Hannover, Germany)



LEUKEMIA360 ▶ Wednesday, Nov.13, 2024

— PM PROGRAM

1:00PM > 2:00PM
LUNCH BREAK
AND BOOTH
VISIT -
NETWORKING

EXHIBITION
AND BREAKS
AREA

2:00PM > 2:15PM | CONFERENCE ROOM | **HOW THE NATIONAL CANCER INSTITUTE SUPPORTS FRANCE'S LEADERSHIP IN LEUKEMIA RESEARCH**

Norbert Ifrah, France's National Cancer Institute (Paris, France)

2:15PM > 2:40PM | CONFERENCE ROOM | **OPALE, THE ORGANIZATION FOR PARTNERSHIPS IN LEUKEMIA**

Pascal Deschaseaux, Institut Carnot OPALE (Paris, France)

2:40PM > 3:00PM | ROOMS 1, 2 AND 3 | **R&D OFFERS**

3:00PM > 3:50PM | CONFERENCE ROOM | **INTERNATIONAL COLLABORATIONS**

3:00pm > 3:25pm

The Dana-Farber Cancer Institute: model and partner for OPALE's international clinical and translational leukemia projects? Richard Stone, Dana-Farber Cancer Institute (Boston, USA)

3:25pm > 3:50pm

The Paris-Shanghai Hematology Gateway: past and future of an exemplary collaboration in the leukemia field. Yang Shen, Shanghai Institute of Hematology (Shanghai, China)

3:50PM > 4:10PM | ROOMS 1 AND 2 | **R&D OFFERS**

4:10PM > 4:55PM | CONFERENCE ROOM | **PITCHES: 3 EXAMPLES OF COMPANIES AND OPALE RESEARCH ENTITIES DEVELOPING INNOVATIONS TOGETHER IN THE LEUKEMIA FIELD**

4:10pm > 4:25pm

The blood and bone marrow optical twin. Jacques Klossa (Tribvn) and François Delhommeau (UMR938)

4:25pm > 4:40pm

Contribution to the preclinical development of a new CAR-T cell therapy. Richard Sainson (Advesya) and Raphaël Itzykson (U944/ALFA)

4:40pm > 4:55pm

Comprehensive development of a novel targeted AML treatment. Patrick Therasse (Servier) and Stéphane De Botton (Gustave Roussy)

4:55PM > 5:15PM | ROOMS 1 AND 2 | **R&D OFFERS**

5:15PM > 5:45PM | CONFERENCE ROOM | **ROUND TABLE: WHAT ARE THE KEYS TO SUCCESSFUL INDUSTRY-ACADEMIA RESEARCH PARTNERSHIPS IN LEUKEMIA AND RELATED DISEASES?**

Norbert Vey, Institut Paoli-Calmettes (Marseille, France), Jean-Pierre Bizzari (New York, USA), Rita Vieira, Daiichi Sankyo (Lisbon, Portugal) and Richard Delarue, Beigene (Neuchâtel, Suisse)

5:45PM > 5:50PM | CONFERENCE ROOM | **TAKE HOME MESSAGES**

Hervé Dombret, Institut Carnot OPALE (Paris, France)

5:50PM > 7:00PM | HALL | **APERÓ AND NETWORKING**

